

Ramo



SERIES

Single Screw Pumps (Progressive Cavity)

Hygienic Pump for Food, Beverages & Pharmaceutical Application



Pump Range

Max. Capacity	: 40 m ³ /hr
Max. Pressure	: 24 Bars
Viscosity	: 1,00,000 Cst
Standard Material	: Stainless steel seamless pipe with mirror finish surfaces in SS 304, SS 316 (Food Grade Quality).
Drive Shaft	: Manufactured from various high quality stainless steel.
Rotor	: In SS 304 & SS 316.
Universal joint	: Double sealed Pin type in SS304 & SS316.
Shaft sealing	: Standard options are with soft packing (Food Grade), Cartseal and Mechanical Seal.
Stator	: NCR, Neoprene, EPDM (Also available in white rubber.)

Principle

Single screw pumps belong to the family of rotary positive displacement pumps, which works on unique principle of Progressive Cavity Pumps. The principle feature of this pump is based on a single helical rotor turning eccentrically in a double threaded helical stator twice the pitch length. As it rotates, a series of sealed cavities, 180 degrees apart are formed, which move along the pump from suction to discharge. As one cavity is closing, the opposite cavity is increasing in size at exactly the same rate to produce a non-pulsating, positive displacement flow.

Application

Loading, Unloading, Transfer, Re-circulation, Feeding to spray driers, Filling etc.

Industries

Distilleries & Breweries, Canning, Confectioneries, Cosmetics, Dairy, Fish & Food Processing, Honey Processing, Ice Cream, Malt & Cocoa, Pharmaceutical, Paste Industry, Vegetable Processing, Wineries etc.

Fluid Handled

Beer & Malt, Creams, Cheese, Chocolate, Essences, Fruit Juices & Squashes, Gelatin Solution, Honey, Jam, Jellies, Pickles, Liquid Glucose, Lotions, Mango Pulp, Shampoos, Syrups, Tomato Juice/ Paste, Yoghurt, Yeast Cream etc.

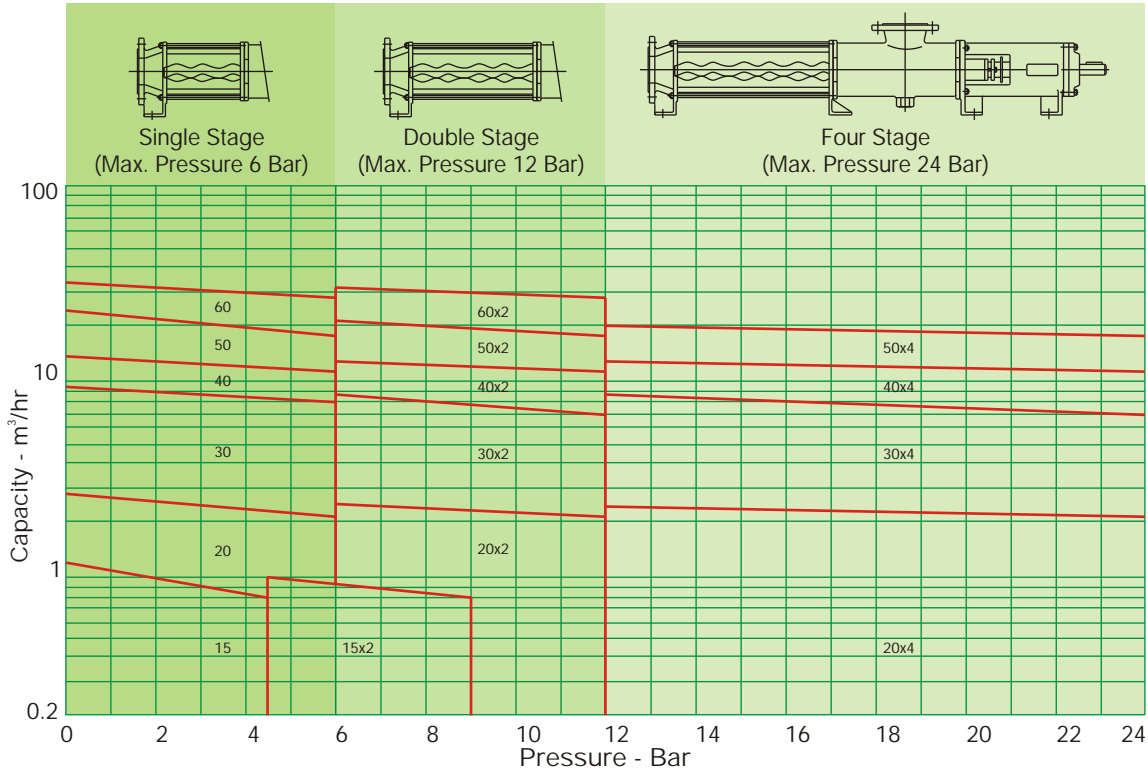
Salient Features

- Non-Contaminating: As the pump being used for HYGENIC application, all parts in contact with the liquid is in Smooth Stainless Steel finish eliminating the product retaining Pockets, subsequently avoiding the bacterial & chemical contamination. Further the stator is also made of non-contamination rubber.
- Non retaining pockets: All internal contours are designed to be swept by the fluid flow or by detergent during in line cleaning, thus eliminating products retaining pockets, which can cause chemical or bacteriological contamination.
- Low NPSH (R): High suction lift can work against high vacuum. Ideal for pumping viscous fluids from vacuum pan.
- Gentle handling of fluids: Low Fluid Velocities ensures gentle handling of shear sensitive fluids without aeration or damage.
- Non- Clogging: Ability to handle solids in suspension or mixtures containing high percentage of solids.
- End connections: Standardized with IDF /SMS connections. Flanged connections available on request.
- Torsion free metal: Bonded stator for higher efficiency & per stage pressure.

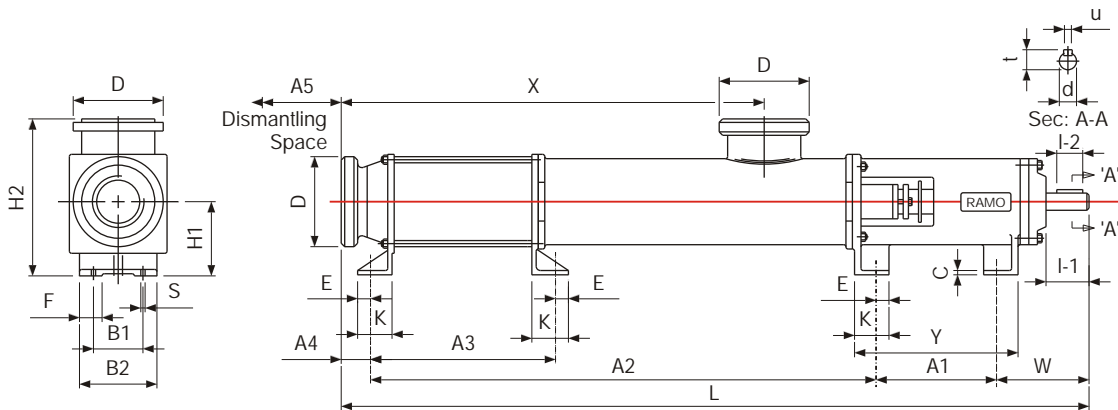


Theoretical performance data for Ramo 'H' series single screw pumps

Performance data is typical only on water at 30°C



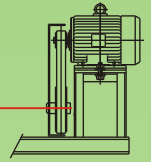
Dimensions



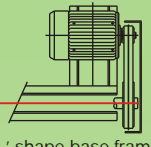
Type & Size	Basic Dimensions																Shaft Dimensions					Wt. In Kgs.			
	A1	A2	A3	A4	A5	B1	B2	C	K	E	F	H1	H2	W	X	Y	L	S1	D	d	I-1		I-2	t	u
H-20	133	442	—	18	275	50	75	10	45	15	25	90	150	81	341	193	700	10	1 ½" IDF	22	30	20	16.0	5	12.0
H-20x2	—	542	—	—	—	—	—	—	—	—	—	—	—	—	441	—	800	—	—	—	—	—	—	—	13.0
H-20x4	—	871	457	—	—	—	—	—	—	—	—	—	—	—	763	—	1205	—	—	—	—	—	—	—	27.0
H-30	177	610	—	25	355	70	92	10	50	20	28	100	186	106	511	237	940	12	2" IDF	22	50	40	24.5	6	26.0
H-30x2	—	760	—	—	—	—	—	—	—	—	—	—	—	—	611	—	1090	—	—	—	—	—	—	—	29.0
H-30x4	—	1190	679	—	—	—	—	—	—	—	—	—	—	—	1072	—	1536	—	—	—	—	—	—	—	44.0
H-40	177	779	—	40	450	78	110	12	60	20	34	112	217	125	661	257	1125	12	2 ½" IDF	28	60	40	31.0	8	40.0
H-40x2	—	979	472	—	—	—	—	—	—	—	—	—	—	—	861	—	1325	—	—	—	—	—	—	—	45.0
H-40x4	—	1539	893	—	—	—	—	—	—	—	—	—	—	—	1359	—	1943	—	—	—	—	—	—	—	75.0
H-50	203	977	336	40	575	92	134	14	70	25	45	132	272	160	797	293	1380	15	3" IDF	32	80	60	35.0	10	60.0
H-50x2	—	1227	586	—	—	—	—	—	—	—	—	—	—	—	1047	—	1630	—	—	—	—	—	—	—	71.0
H-50x4	228	1894	1108	49	700	110	142	14	75	25	40	160	310	166	1637	328	2308	18	4" IDF	38	80	60	42.0	10	84.0
H-60	228	1183	401	49	700	110	142	14	75	25	40	160	310	166	930	328	1606	18	4" IDF	38	80	60	42.0	10	80.0
H-60x2	—	1483	701	—	—	—	—	—	—	—	—	—	—	—	1230	—	1901	—	—	—	—	—	—	—	100.0

Above dimensions are for reference only & subject to change.

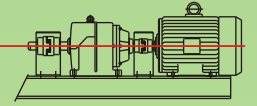
Pump drives and accessory options



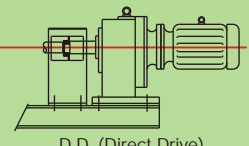
OVH (Overhead Drive) with 'V' belt, pulley and guard.



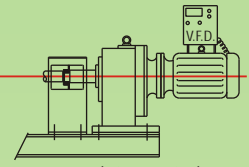
'L' shape base frame with 'V' belt, pulley and guard.



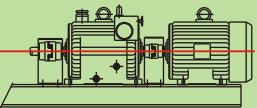
D.D. (Direct Drive) with gear box, motor and guard.



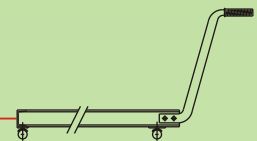
D.D. (Direct Drive) with geared motor and guard.



D.D. (Direct Drive) with variable frequency drive



D.D. (Direct Drive) with mech. Speed variable drive, motor and guard.



Trolley Mounting Option (2 Wheels / 4 Wheels)

Rep. By:

Manufactured By:



P D PUMPS & SYSTEMS

H. O.: B 114, 1st Floor, Durian Estate, Goregaon-Mulund Link Road, Goregaon East, Mumbai 400 063, India.
Ph: 2876 9039 / 5698 6896 Fax: +91 - (0)22 - 2876 9056
Email: ramopump@vsnl.com Website: www.pdpumps.com

Works: Plot No. 3-3-30 A4, Postman Kadu, Salem Main Road, Sankari 637301, Salem (Dist.) T.N., India.
Telefax: (04283) 243610 Email: pdpumps@sancharnet.in



Baroda Bangalore Chennai Goa Hyderabad Kolkatta Nagpur New Delhi Pondicherry Pune